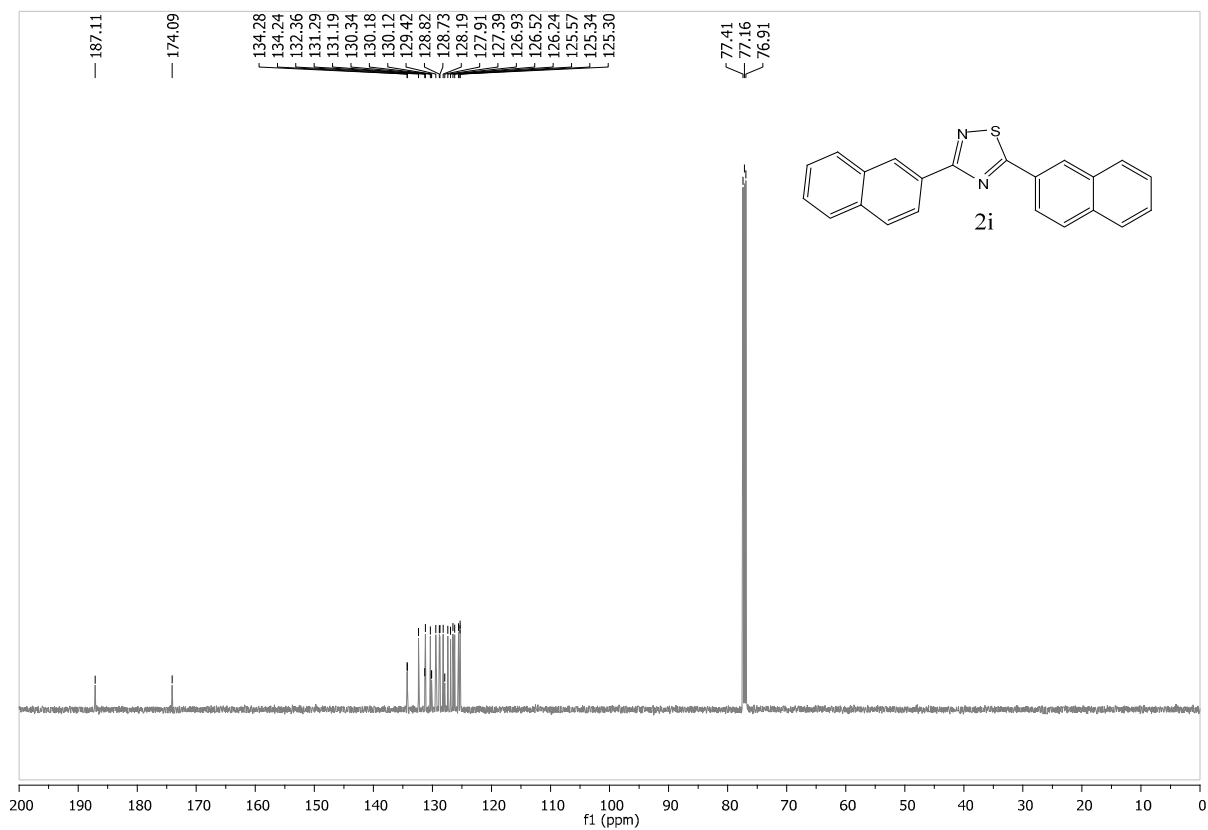
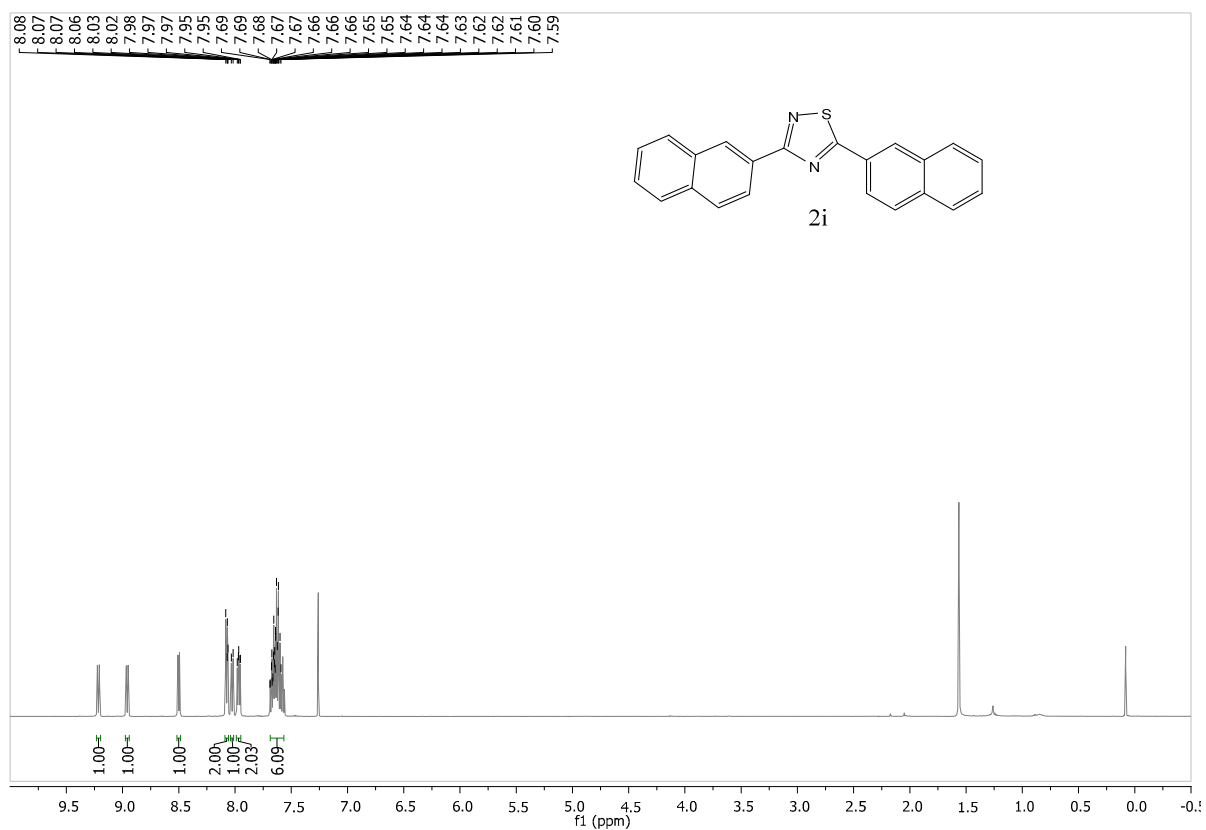
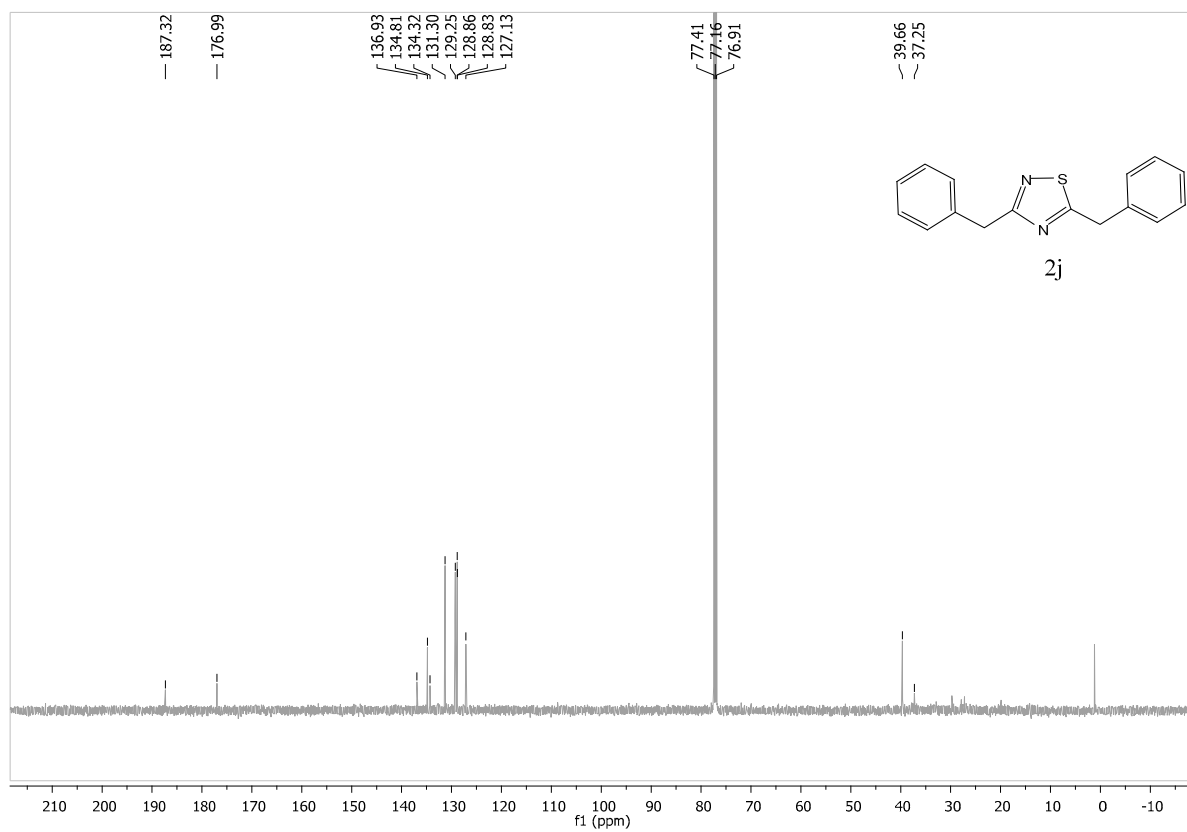
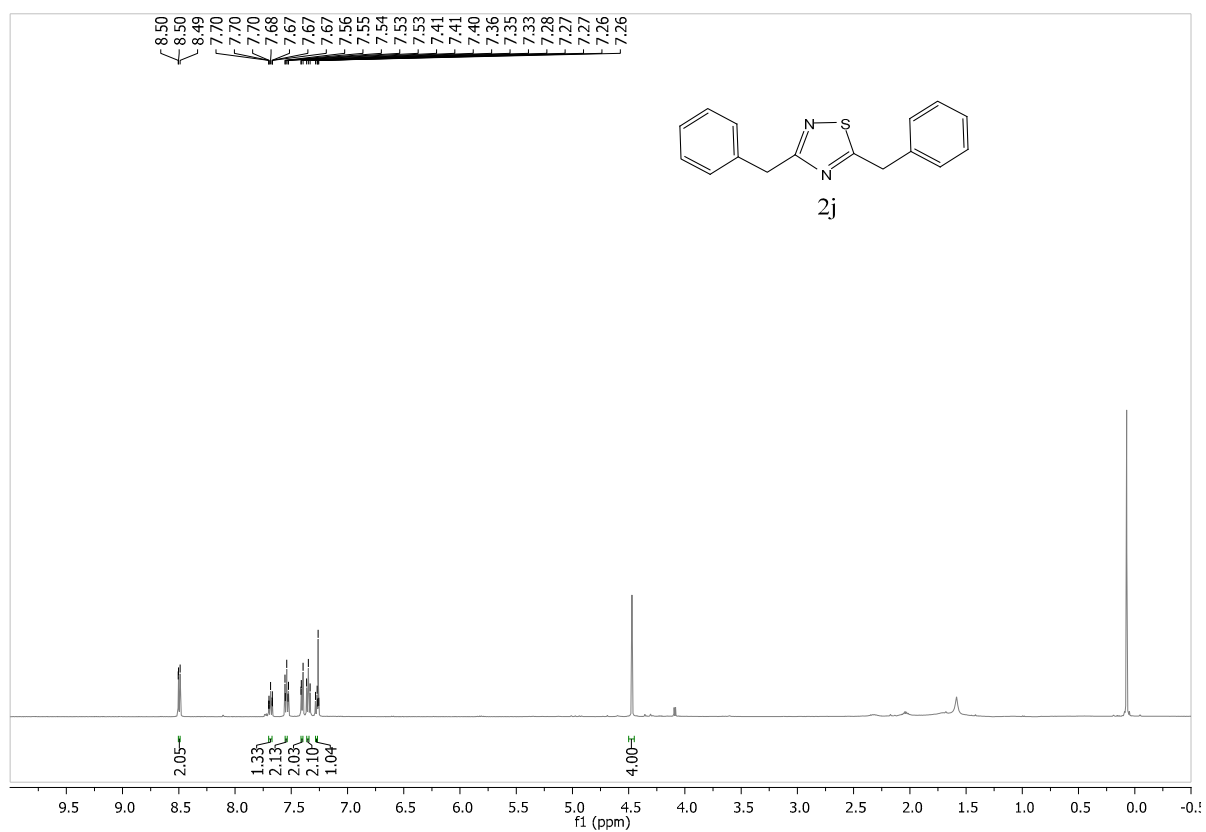


**Fig. 2.8** <sup>1</sup>H and <sup>13</sup>C NMR of product **2h** in CDCl<sub>3</sub>.



**Fig. 2.9** <sup>1</sup>H and <sup>13</sup>C NMR of product **2i** in CDCl<sub>3</sub>.



**Fig. 2.10**  $^1\text{H}$  and  $^{13}\text{C}$  NMR of product **2i** in  $\text{CDCl}_3$ .